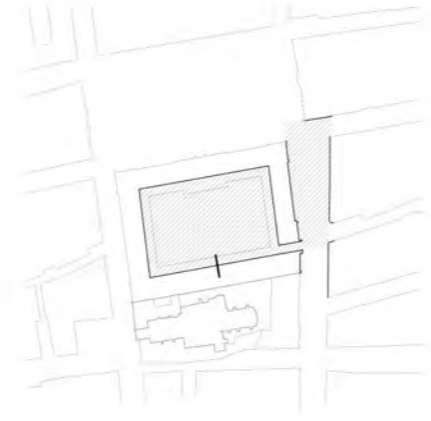
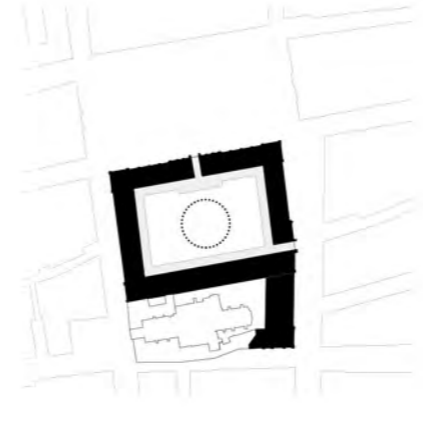




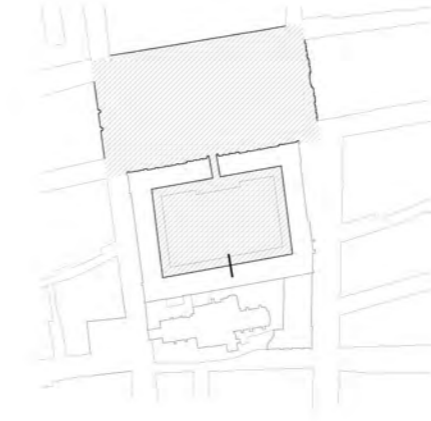
Urban Generosity
Rue du P.E.Herriot
Rue du Platre



Door: City-Museum
Connection between
Urban Generosity-Jardin



Object-Museum
Enclosure
Filter
Nucleus

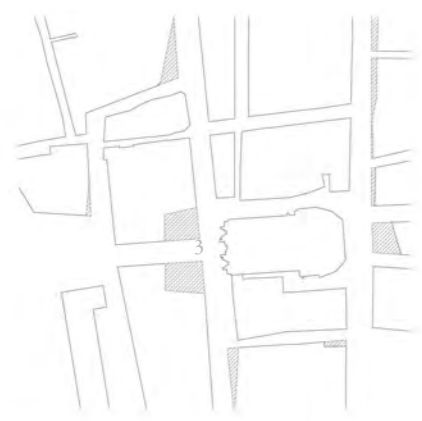


Door: City-Museum
Connection between
Place des Terreaux - Jardin

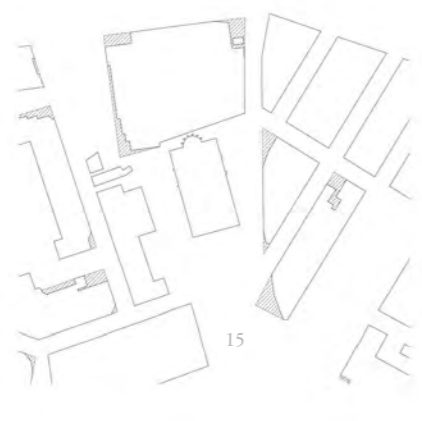


System of Voids
Place des Terreaux
Place Meissonier

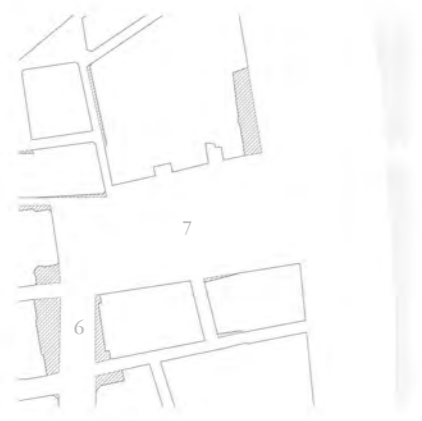
City: Urban Generosity



Place Saint-Nizier



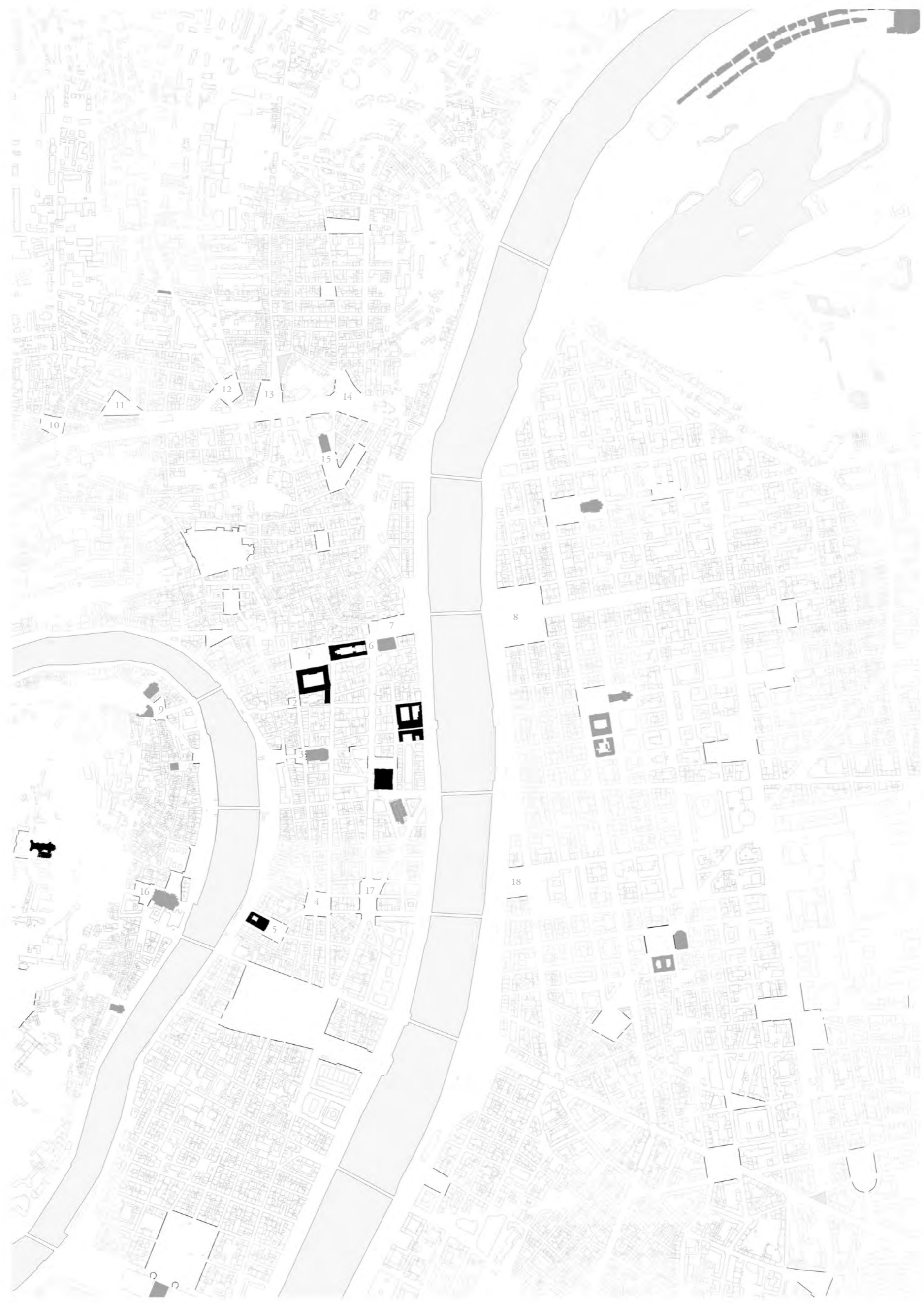
Place Colbert



Place de la Comédie



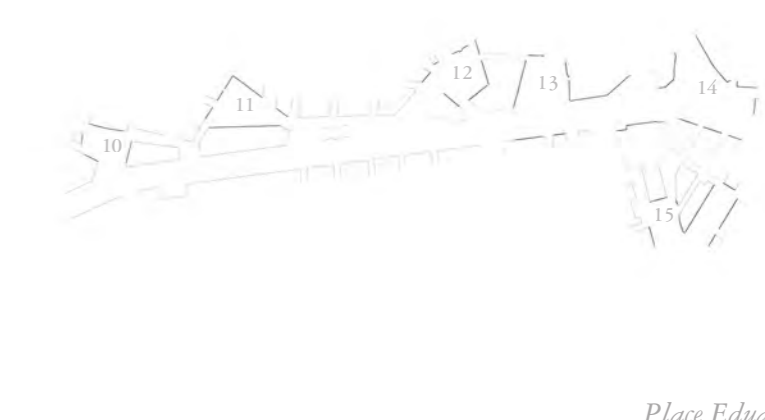
Place Saint-Jean



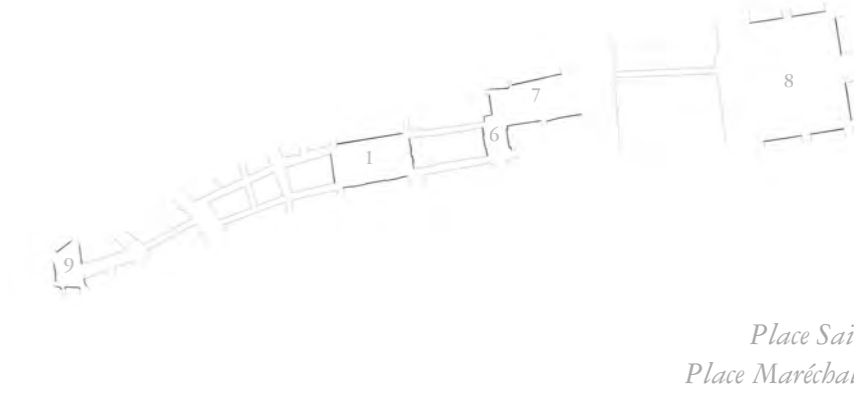
City: System of Voids



Place des Terreaux-
Place des Célestins



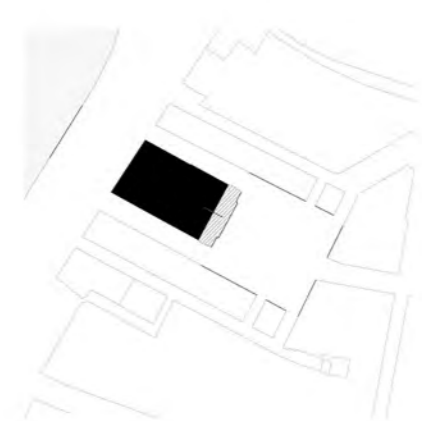
Place Edouard Milland-
Place de la Croix Rousse



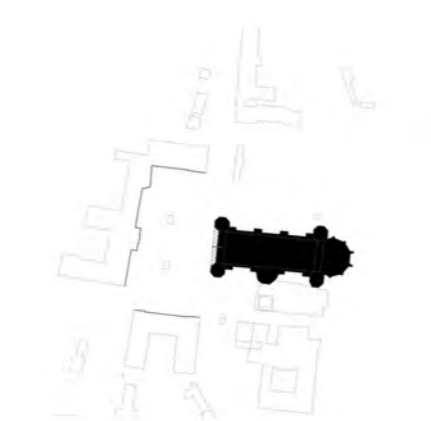
Place Saint-Paul-
Place Maréchal Lyautey



Place Saint-Jean-
Square Delestraint



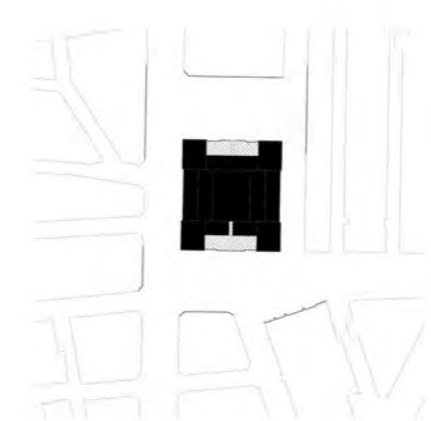
Théâtre de Lyon
Blind Waterfront
Filter on the Square



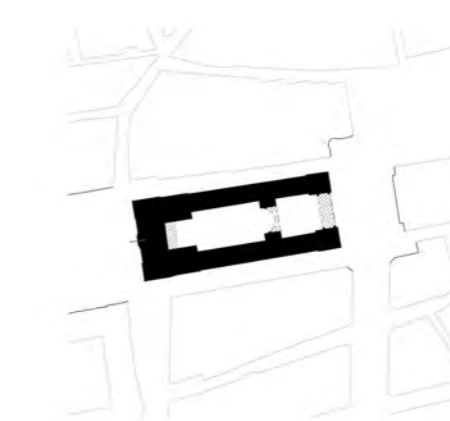
Notre Dame du Fourvière
Filter on the square
Direct Door



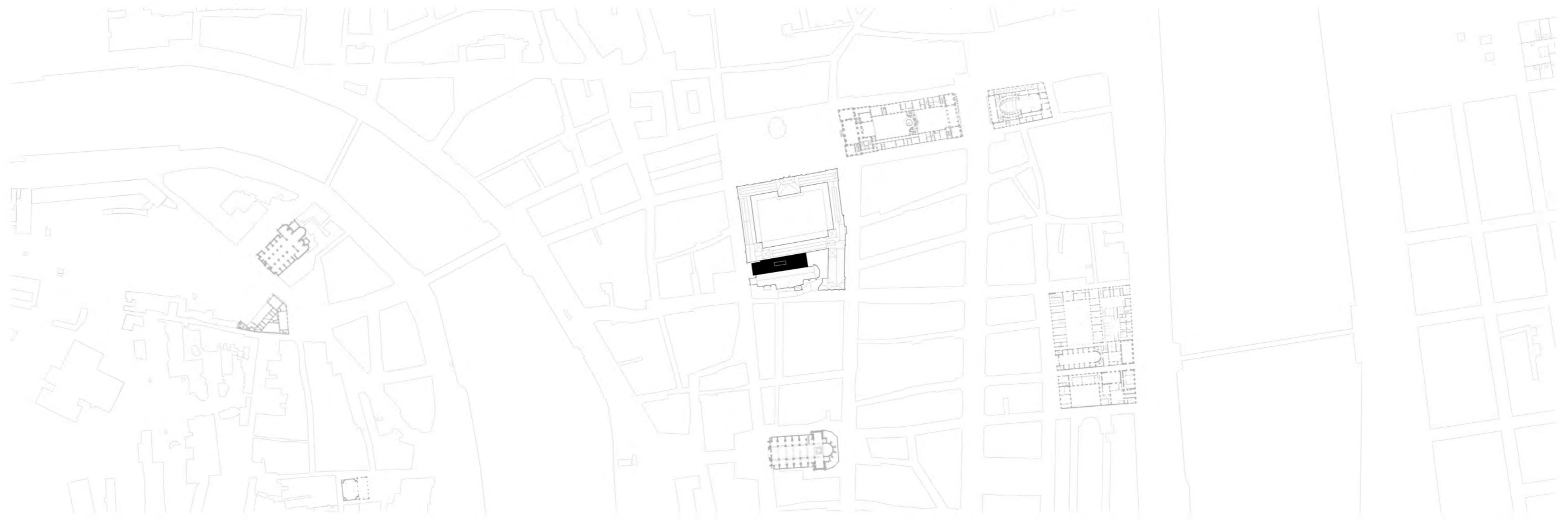
Collège Licée Ampere
Blind door on Courtyard
Filter-Connective Path



Palais de la Bourse
Double filter
Double square



Hotel de Ville
Direct door
Triple Filter (in-out)



Masterplan

0 25 50 100

Insidiative Principle:



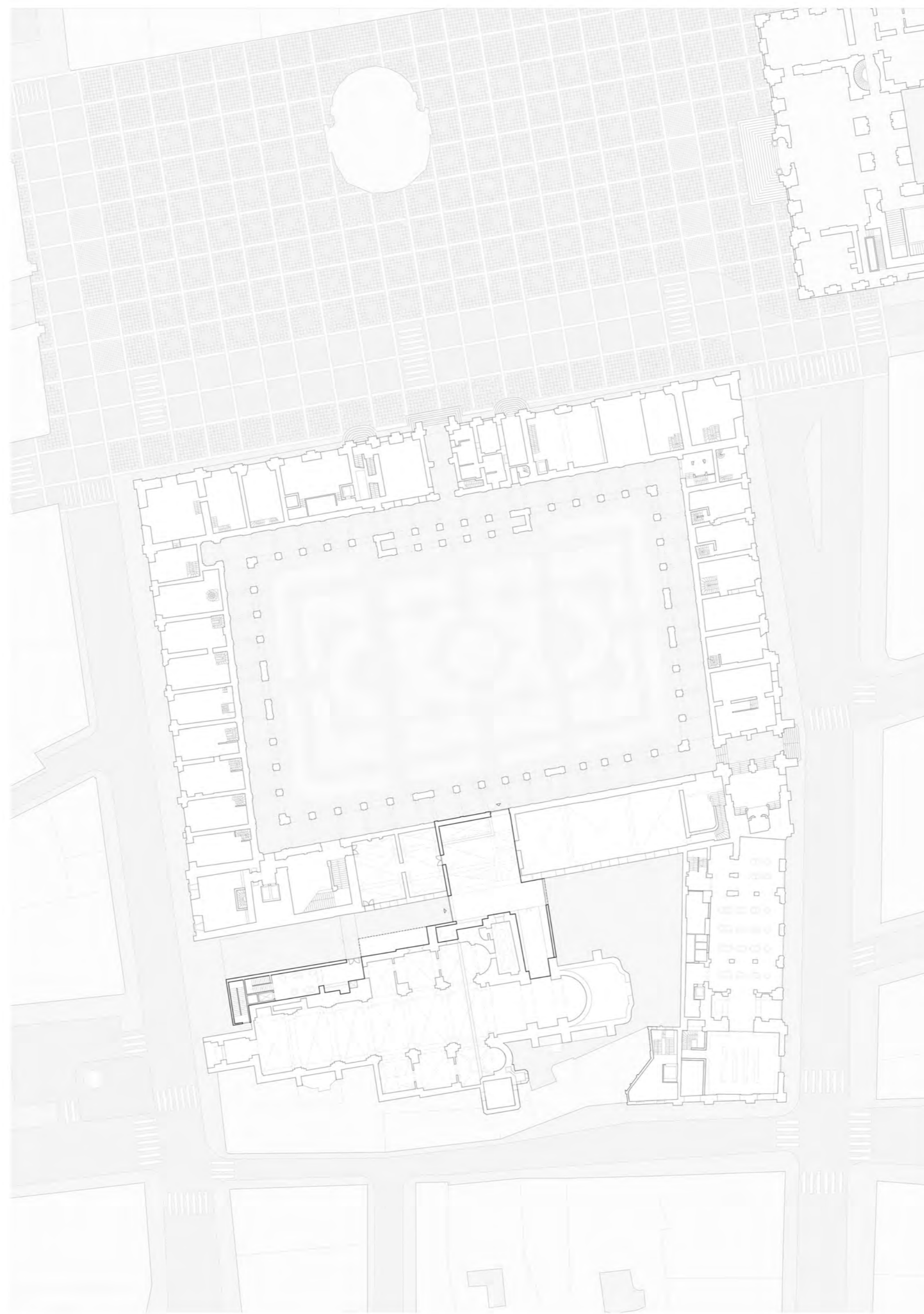
Urban Generosity ←
Set Back Volume



System of Voids ←
Square Interaction



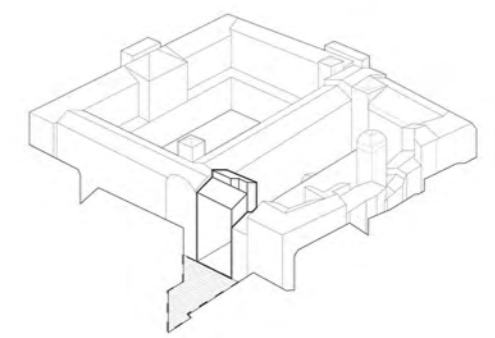
Object-Museum ←
Filter-space



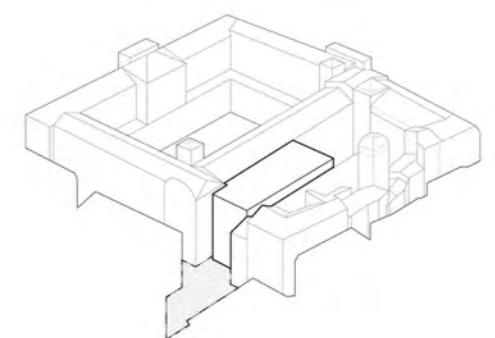
0 5 10 20

Ground Floor Plan

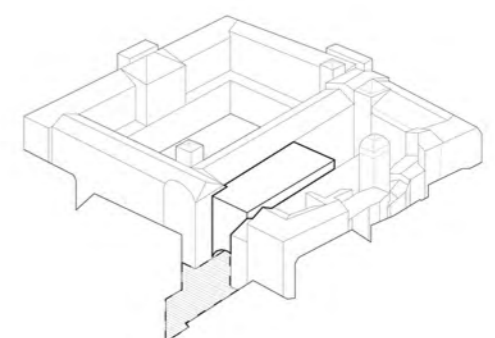
Volumetrical Development:



Set Back Volume
Demolition

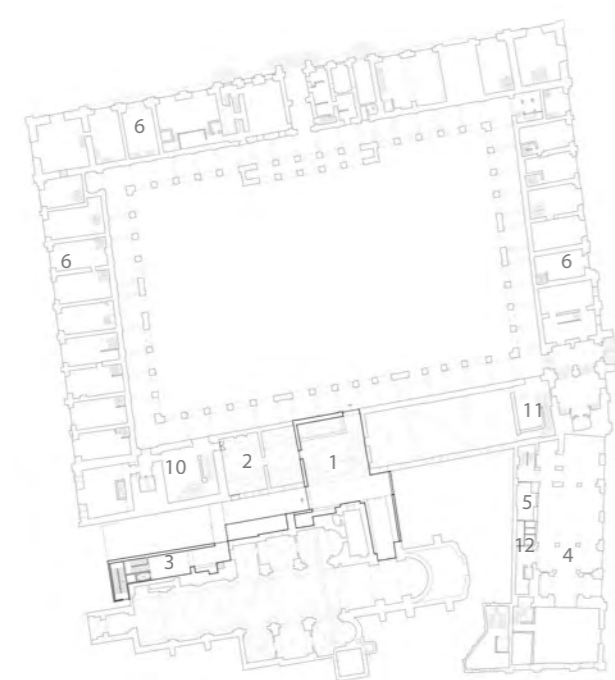


Square Interaction
New space for the city



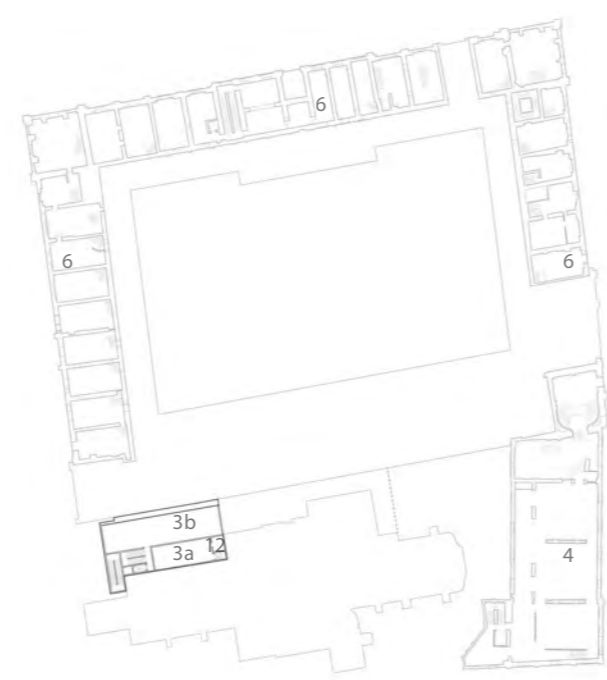
Filter Space
Covered Urban Path

- 1. Entrance Hall
(Double single / group
+ Church Connection)
- 2. BookShop
(Beginning / End of
the Museum Tour)
- 3. Restaurant

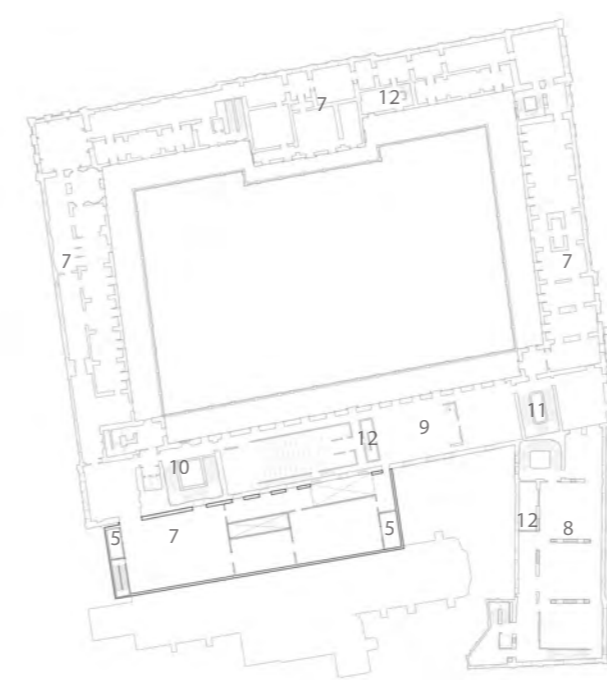


Ground Floor

- 3a. Kitchen + Services
- 3b. Main Lanchroom
- 4. Workshop
- 5. Storage



Mezzanine



1st Floor



2nd Floor

- Shops .6
- Exhibition Spaces .7
- Staff Area .8
- Les Terrasses .9
- St Pierre .10
- Escalier .10
- Thomas Blanchet

- Escalier Pierre .11
- de Chastanet
- Troislets .12
- La Lanterne .13

0 10 20 40

Distribution Floor Plans



Section: System Palais-Addition-Église

View : System Place-Museum

Lighting-Facade System

iGuzzini Underscore InOut EA 25:

LED linear lighting
25.5W 900lm - system value
Size (mm): 3004x10x22
Luminous Efficiency (system value): 33lm/W

1:10

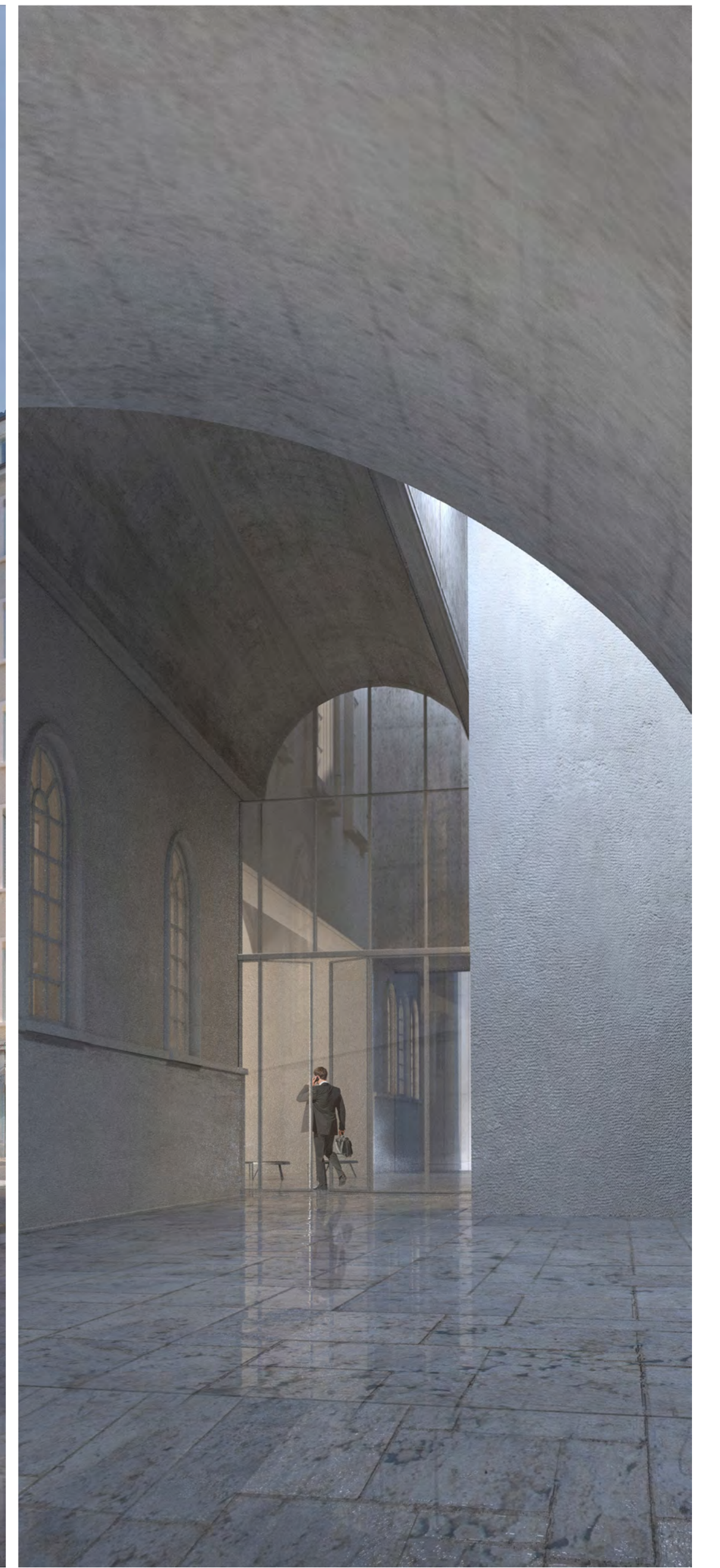
Wall Section:

1. CLS
2. Insulation
3. Bricks (h=40 mm)
4. Bricks (h=80 mm)
5. Air Cavity 40mm
6. iGuzzini EA 25

A linear lighting system, integrated with the brick structure of the project's massive facade

During the day, it breaks the shadows defined by the sun, giving more thickness to the bricks

During the night, it defines a series of pixelated words, contributing to the communicative feature of the facade



Section Keyplans

View : Entrance-sequence of spaces

Section: Sequence of spaces

